



# Western Australian Aboriginal Immunisation Schedule



## Childhood

Age/Eligibility	Antigen/Antibody	Brand(s)	Important information
Birth to <7 days	Nirsevimab*	Beyfortus®	For those residing or soon to reside in the Kimberley or Pilbara if the mother did not receive Abrysvo >2 weeks prior to birth. Give as close to birth as possible but can be given up to 8 months of age. See RSV decision aid and links below for further information.
	Hepatitis B	H-B-Vax® II Paed or Engerix®B Paed	
6–8 weeks	DTPa-hepB-IPV-Hib	Infanrix® hexa or Vaxelis®	
	20vPCV	Prevenar® 20	See <a href="#">here</a> for childhood pneumococcal vaccination decision aid
	Rotavirus	Rotarix®	Oral dose 1: Must be given by 14 weeks of age
	MenACWY*	Nimenrix®	
	MenB	Bexsero®	<a href="#">Prophylactic paracetamol</a> recommended
4 months	DTPa-hepB-IPV-Hib	Infanrix® hexa or Vaxelis®	
	20vPCV	Prevenar® 20	See <a href="#">here</a> for childhood pneumococcal vaccination decision aid
	Rotavirus	Rotarix®	Oral dose 2: Must be given by 24 weeks of age
	MenACWY*	Nimenrix®	
	MenB	Bexsero®	<a href="#">Prophylactic paracetamol</a> recommended
6 months	DTPa-hepB-IPV-Hib	Infanrix® hexa or Vaxelis®	
	20vPCV	Prevenar® 20	See <a href="#">here</a> for childhood pneumococcal vaccination decision aid
MRC	MenB	Bexsero®	<a href="#">Prophylactic paracetamol</a> recommended
	MenACWY	Nimenrix®	
12 months	MMR	Priorix® or M-M-R II®	The 2 brands of MMR vaccine are interchangeable
	20vPCV	Prevenar® 20	See <a href="#">here</a> for childhood pneumococcal vaccination decision aid
	MenACWY	Nimenrix®	
	MenB	Bexsero®	<a href="#">Prophylactic paracetamol</a> recommended
MRC	Hepatitis B	H-B-Vax® II Paed or Engerix® B Paed	<32 weeks gestation or <2000g birth weight
All children >12 months with MRC	Children with specified MRC at >12 months of age require 1 dose of Prevenar 20 at diagnosis. See <a href="#">Australian Immunisation Handbook</a>		
18 months	DTPa	Infanrix® or Tripacel®	
	Hib	ActHIB®	
	MMRV	Priorix-Tetra®	Do not administer MMRV as dose 1 of a measles-containing vaccine if <4 years of age
	Hepatitis A	Vaqta® Paed/Adol	
<2 years	Catch-up for MenB is available for Aboriginal children <2 years of age		

See footnotes at bottom of page 4

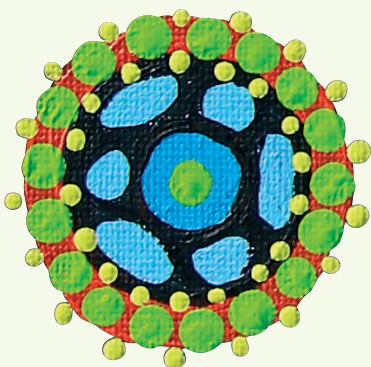
## Childhood (continued)

Age/Eligibility	Antigen/Antibody	Brand(s)	Important information
4 years	DTPa-IPV	Quadracel® or Infanrix®IPV	
	Hepatitis A	Vaqta® Paed/Adol	Not required if previously received 2 doses (first dose at age ≥12 months) at least 6 months apart
	20vPCV 23vPPV	Prevenar® 20 Pneumovax® 23	See <a href="#">here</a> for childhood pneumococcal vaccination decision aid

## Respiratory Syncytial Virus (RSV) – Kimberley and Pilbara regions ONLY

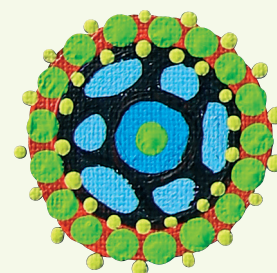
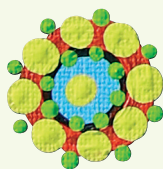
Age/Eligibility	Antigen/Antibody	Brand	Important information
See <a href="#">here</a> for Kimberley and Pilbara RSV decision aid.	Nirsevimab*	Beyfortus®	<p>The RSV immunisation decision aid contains guidance for residents, or soon-to-be residents, of the Kimberley or Pilbara, who meet <b>one</b> of the following criteria:</p> <ul style="list-style-type: none"> <li>• Abrysvo for patients from 28 weeks gestation</li> <li>• Beyfortus for the following: <ul style="list-style-type: none"> <li>- non-Aboriginal child without a medical-risk condition aged &lt; 8 months, or</li> <li>- Aboriginal child without a medical-risk condition up to 24 months of age, or</li> <li>- all children with a medical-risk condition up to 24 months of age</li> </ul> </li> </ul> <p><b>Note:</b> Children with medical-risk conditions may have up to 2 doses of Beyfortus until 24 months of age, at a minimum of 6 months apart.</p>

See footnotes at bottom of page 4



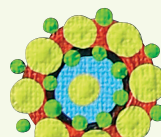
# Adolescent and adult

Age/Eligibility	Antigen	Vaccine brand(s)	Important information
All adolescents and adults with MRC	All children and adolescents aged over 12 months to under 18 years with specified <a href="#">MRC</a> should receive 1 dose of Prevenar 20 at diagnosis. Refer to the <a href="#">Australian Immunisation Handbook</a> for details		
Year 7	HPV	Gardasil®9	Catch-up for adolescents <26 years of age
	dTpa	Boostrix® or Adacel®	
Year 10	MenACWY	Nimenrix® or MenQuadfi	
≥18 years	<b>MRC</b> Herpes-zoster	Shingrix®	2 doses, given 1–2 months apart
Pregnant	dTpa	Boostrix® or Adacel®	Each pregnancy, ideally between 20–32 weeks
	RSV	Abrysvo®	From 28 weeks gestation. See <a href="#">decision aid</a>
	Influenza	Vaxigrip®Tetra, Flucelvax®Quad	Each pregnancy, any trimester
≥20 years	Hepatitis B	Engerix® B	For non-immune persons. See the <a href="#">Australian Immunisation Handbook</a> for recommendations and timing of doses
≥50 years	13vPCV	Prevenar® 13	See the <a href="#">Australian Immunisation Handbook</a> for timing of doses
	23vPPV	Pneumovax23®	
	Herpes-zoster	Shingrix®	
Born after 1965*	MMR	Priorix® or M-M-R II®	Give 1 or 2 doses as required. Whilst serology is not routinely recommended, see <a href="#">WA adult measles vaccination program</a> for details. The 2 brands of MMR vaccine are interchangeable



# 2025 Influenza

Age/Eligibility	Vaccine brand(s)	Important information
6 months to <5 years	Vaxigrip®Tetra, FluQuadri® Flucelvax®Quad	For children <9 years, or persons following a stem cell or solid organ transplant, 2 doses are required 1 month apart in the first year they receive influenza vaccine. One dose annually in subsequent years.  For information on influenza dosing see the <a href="#">Australian Immunisation Handbook</a> or annual <a href="#">ATAGI advice</a> on seasonal influenza vaccines.
5 years to <65 years	Flucelvax®Quad, Vaxigrip®Tetra	
Pregnancy	Vaxigrip®Tetra, Flucelvax®Quad	Each pregnancy, any trimester
≥65 years	Fluad® Quad, Flucelvax®Quad	Preferentially use adjuvanted QIV



## Using the term Aboriginal

Within Western Australia, the term Aboriginal is used in preference to Aboriginal and Torres Strait Islander, in recognition that Aboriginal people are the original inhabitants of Western Australia. Aboriginal and Torres Strait Islander may be referred to in the national context and Indigenous may be referred to in the international context. No disrespect is intended to our Torres Strait Islander colleagues and community.

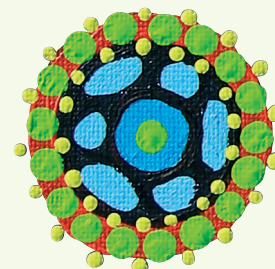
## References

\* Refers to WA State-funded Programs.

**MRC** refers to people with medical risk conditions. Refer to the current online edition of [Australian Immunisation Handbook](#) for all medical risk conditions, recommendations and timing of doses.

**Persons aged <20 years** can catch-up scheduled vaccines, refer to [Australian Immunisation Handbook](#) for timing of doses.

This document can be made available in alternative formats on request.



Produced by the Communicable Disease Control Directorate  
© Department of Health 2026

Copyright to this material is vested in the State of Western Australia unless otherwise indicated. Apart from any fair dealing for the purposes of private study, research, criticism or review, as permitted under the provisions of the *Copyright Act 1968*, no part may be reproduced or re-used for any purposes whatsoever without written permission of the State of Western Australia.